

Powered by
Curiosity

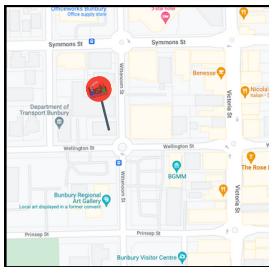


**2025
COURSE
BOOKLET**

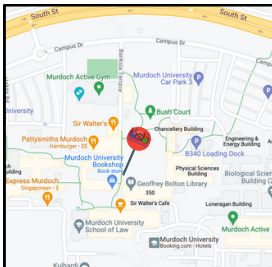
Our Delivery Locations



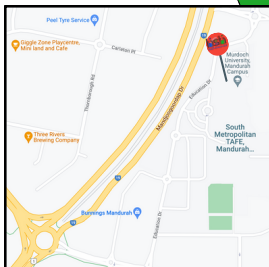
HSH Perth Hub
Level 1, 100 Stirling Street, Perth



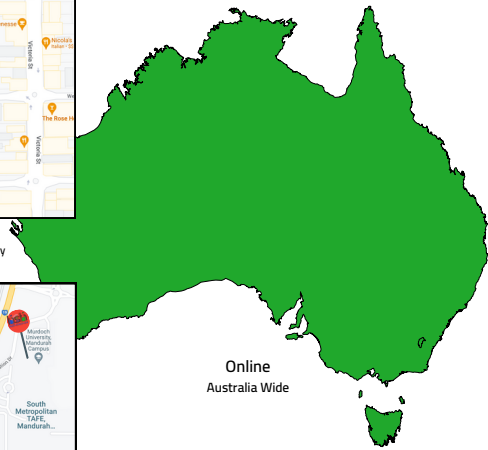
HSH Bunbury Hub
62A Wittenoom St, Bunbury



HSH Murdoch Hub
Murdoch University, South St, Murdoch



HSH Murdoch Manudrah Hub
Murdoch University, Education Dve, Greenfields



Online
Australia Wide

Contents...



Health & Medical

Nursing:

- HLT33115 - Certificate III in Health Services Assistance
- 52895WA - Certificate IV in Preparation for Health & Nursing Studies

Allied Health

- HLT33021 - Certificate III in Allied Health Assistance
- HLT43021 - Certificate IV in Allied Health Assistance

Public Health

- HLT36015 - Certificate III in Population Health
- 22582VIC - Certificate IV in Tertiary Preparation (Health & Disease)

Medic:

- HLT31220 - Certificate III in Basic Health Care
- HLT41120 - Certificate IV in Health Care

Dual:

- HLT33021 - Cert III in allied health assistance & HLT33115 - Cert III in health services assistance
- HLT31220 - Cert III in Basic Health Care & HLT33115 - Cert III in health services assistance



Animal, Marine & Environmental

- ACM30122 - Certificate III in Animal Care Services
- 22608VIC - Certificate IV in Science (Biology) - Marine & Terrestrial Science
- 22582VIC - Certificate IV in Tertiary Preparation (Marine & Terrestrial Biology)
- 22582VIC - Certificate IV in Tertiary Preparation (Environmental Studies)



Laboratory & Forensics

- MSL30122 - Certificate III in Laboratory Skills
- 22608VIC - Certificate IV in Science (Biology) - Forensic Science



Fitness, Sport & Nutrition

- SIS30321 - Certificate III in Fitness
- 22582VIC - Certificate IV in Tertiary Preparation (Sports & Nutrition)



Community, & Mental Health

- CHC32015 - Certificate III in Community Services
- PSP30218 - Certificate III in Auslan
- 22582VIC - Certificate IV in Tertiary Preparation (Psychology)
- CHC43215 - Certificate IV in Alcohol & Other Drugs

About Us...

We aim to provide as many pathways for our students as possible. This ensures that students are geared up and ready for their career, regardless if they're leaning toward university or employment.

A Certificate IV satisfies many university entrance requirements and can provide entry into a lot of non-competitive courses. If students are aiming to get into a competitive course (eg: Nursing) they should have a plan B with the aim of switching after a semester.



Our Location

Health Science Hub has four classroom delivery sites across Western Australia, as well as students completing online courses across Australia.

We have Hubs in Perth CBD and Bunbury (in the South West) and also deliver out of Murdoch University campus (Perth and Mandurah).

Our Team

We have been able to create the most amazing team of trainers to help you on your learning journey. Our training team comes from various backgrounds including science teaching, registered nurses, exercise science professionals, and forensic scientists. Whichever course you choose with us - you can be guaranteed that your trainer has the skills and knowledge that will help you succeed.

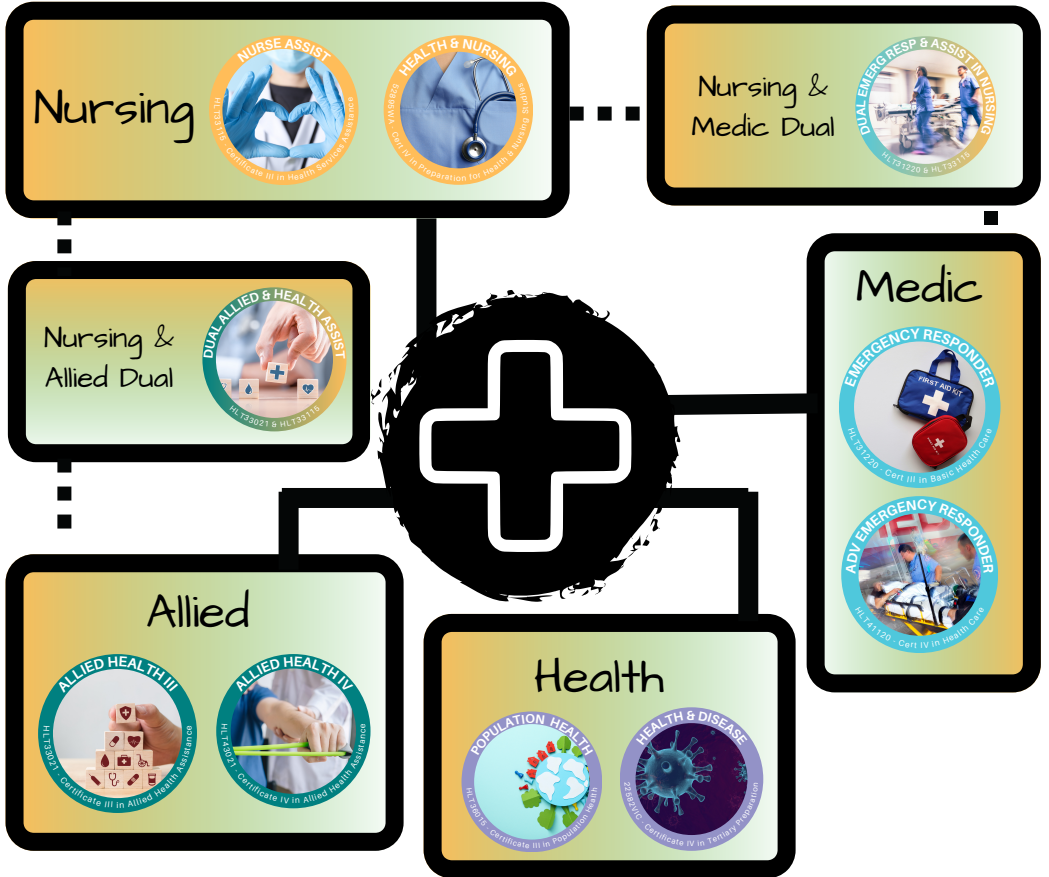
Our Specialty

Health Science Hub does not try to offer multiple courses in many different industries. We concentrate on Health & Science. And to narrow it down even more - we focus on youth! This means that our courses are specifically developed for this age group and taught in a way that is both engaging and future focused for our students.

Our Technology

Each of our courses use technology. Each student will be required to have access to their own device. This is so that you can access our content, videos, podcasts, and more. We also use apps in the classroom that will help you get a better understanding of how science works.

Health & Medical



university Here are some suggested University courses that these courses could lead to:

- Bachelor of Health Science
- Bachelor of Medical Science
- Bachelor of Science
- Bachelor of Sports Science
- Bachelor of Nursing*
- Bachelor of Psychology
- Bachelor of Social Work
- Bachelor of Paramedicine

*Nursing is competitive - although you may meet entry requirements, there is no guarantee of acceptance. This is also the case for ATAR entry.

ASSIST IN NURSING

2025



ABOUT THE COURSE

This comprehensive program serves as your first stepping stone, providing the foundational knowledge and practical skills necessary to kickstart your career in healthcare. From learning essential patient care techniques to gaining insight into healthcare procedures and protocols, you'll be well-equipped to make a positive impact in healthcare settings.

Our experienced instructors will guide you through hands-on training and clinical skills, ensuring you develop the confidence and competence required to excel as a nursing assistant. Whether you're passionate about providing compassionate care to patients or aspiring to pursue further education in nursing, this course is your gateway to a fulfilling and rewarding career in healthcare.

UNITS

- BSBMED301 Interpret and apply medical terminology appropriately
- BSBWOR301 Organise personal work priorities and development
- CHCCOM005 Communicate and work in health or community services
- CHCDIV001 Work with diverse people
- HLTAAP001 Recognise healthy body systems
- HLTWHS001 Participate in workplace health and safety
- HLTINF006 Apply basic principles and practices of infection prevention and control
- CHCCCS002 Assist with movement
- CHCCCS012 Prepare and maintain beds
- CHCMHS001 Work with people with mental health issues
- HLTAID009 Provide cardiopulmonary resuscitation
- HLTAID010 Provide basic emergency life support
- HLTAID011 Provide First Aid
- HLTHPS001 Take clinical measurements
- HLTWHS005 Conduct manual tasks safely

*Note there are some changes to units for the online program

HLT33115 – CERTIFICATE III IN HEALTH SERVICES ASSISTANCE



Entry Requirements

Recommended for:
Year 11 or 12 Students
Preferable Entry Req:

- C Grade minimums for English, Maths, & Science
- NAPLAN/OLNA



Classroom

Timeframe:
Terms 1-3
Cost:
\$2200



Experience

****Classroom Only Requirements:**
Clinical measurements including urinalysis and blood glucose testing



Optional Upgrade

Acute Care Upgrade:
80 hours of work placement in an Aged Care facility
Additional Cost: \$500



Online
Timeframe:
18 months
Cost:
\$2000



www.healthsciencehub.com.au



1800 474 786

HEALTH & NURSING PREP

2025



RTO 52806

ABOUT THE COURSE

Prepare yourself for a successful journey into health and nursing studies with a qualification that will launch your understanding of the human body to the next level!

You'll gain a comprehensive understanding of human anatomy and physiology, and learn to interpret and apply medical terminology effectively. You'll then explore the use of medication in healthcare and look into how we use infection control practices to limit the spread of microbes in different scenarios.

As you move through this program, you'll start to prepare for a seamless transition to tertiary education by mastering vital study skills and communication techniques. You'll learn to tackle advanced studies with ease through teamwork and online research, setting you up to excel in academic settings.

UNITS

- BSBMED301 Interpret and apply medical terminology appropriately
- BSBTEC301 Design and produce business documents
- PREAPU401 Provide information on human anatomy and physiology
- PREASU403 Apply academic skills
- PREMHA404 Use mathematics in a nursing and health context
- PREMHS402 Provide information on the fundamental principles of microbiology used in health settings
- PREPHC405 Use fundamentals of physics and chemistry in a health context

52895WA - CERTIFICATE IV IN PREPARATION FOR HEALTH & NURSING STUDIES



Entry Requirements

Recommended for:

Year 12 Students

Mandatory Entry Req:

- C Grade minimums for English, Maths, & Science
- NAPLAN/OLNA



Classroom

Timeframe:

Terms 1-3

Cost:

\$2500



Online

Timeframe:

18 months

Cost:

\$2200

ALLIED HEALTH III



hsh
Health Science Hub # RTO 52806

ABOUT THE COURSE

Designed for aspiring healthcare professionals, this comprehensive course provides the essential skills and knowledge needed to support allied health practitioners in delivering high-quality care to patients. Through a blend of classroom learning and practical experience, you'll develop expertise in areas such as patient care, rehabilitation support, and allied health duties within various healthcare settings. Our experienced instructors will guide you through hands-on training, ensuring you graduate with the confidence and competence to excel in your role.

Whether you dream of working in hospitals, clinics, rehabilitation centres, or community health organisations, our Certificate III in Allied Health Assistance program opens doors to diverse career opportunities in the rapidly growing healthcare sector.

UNITS

- BSBMED301 Interpret and apply medical terminology appropriately
- CHCCOM005 Communicate and work in health or community services
- CHCDIV001 Work with diverse people
- HLTAHA027 Assist with an allied health program
- HLTAHA049 Recognise impact of health conditions
- HLTINF006 Apply basic principles and practices of infection prevention and control
- HLTWHS001 Participate in workplace health and safety
- CHCAGE007 Recognise and report risk of falls
- CHCCCS002 Assist with movement
- HLTAAP001 Recognise healthy body systems
- HLTWHS005 Conduct manual tasks safely
- CHCLAH001 Work effectively in the leisure and health industries

HLT33021 - CERTIFICATE III IN ALLIED HEALTH ASSISTANCE



Entry Requirements

Recommended for:

Year 11 or 12 Students

Preferable Entry Req:

- C Grade minimums for English, Maths, & Science
- NAPLAN/OLNA



Classroom

Timeframe:

Terms 1-4 (Note cannot be finished in 3 terms)

Cost:

\$2500



Workplace Visits

Location:

Brightwater Aged Care Facilities OR other Allied Health Facilities

Time allocated:

120 Hours

Requirement:

HSH Scrub Uniform
NDIS Worker Clearance
Police Clearance
Immunisation History
Flu Vaccination



www.healthsciencehub.com.au



1800 474 786



Brightwater

ALLIED HEALTH IV

2025



ABOUT THE COURSE

Building upon your previous Certificate III studies, this course delves deeper into key aspects of allied health, empowering you to make an even greater impact in your chosen field.

This course will explore essential topics such as building relationships and empowerment, functional capacity, nutrition, and speech pathology, whilst gaining a comprehensive understanding of how these elements intersect to promote holistic well-being. Throughout this course you'll develop advanced skills in assessment, intervention, and communication, helping you to provide high-quality care and support to others.

We want to help you take the next step towards your allied health career goals and empower you to make a meaningful difference in the lives of others.

UNITS

Completed in the previous Certificate III program:

- BSBMED301 Interpret and apply medical terminology appropriately
- CHCDIV001 Work with diverse people
- HLTINF006 Apply basic principles and practices of infection prevention and control
- CHCCCS002 Assist with movement
- CHCCCS020 Respond effectively to behaviours of concern
- HLTAHA027 Assist with an allied health program
- HLTAHA049 Recognise impact of health conditions
- CHCAGE007 Recognise and report risk of falls
- HLTWHS005 Conduct manual tasks safely

New units:

- HLTAID009 Provide cardiopulmonary resuscitation
- CHCCCS036 Support relationships with carer and family
- CHCCCS038 Facilitate the empowerment of people receiving support
- HLTAHA047 Engage with clinical supervision and delegation
- HLTWHS002 Follow safe work practices for direct client care
- HLTAHA032 - Support maintenance of functional status
- HLTAHA043 - Support the provision of basic nutritional advice and education
- HLTAHA039 - Assist in the development of meals and menus to meet dietary and cultural requirements
- HLTAHA034 - Support the development of speech and communication skills

HLT43021 - CERTIFICATE IV IN ALLIED HEALTH ASSISTANCE



Entry Requirements

Recommended for:
Year 12 students

Mandatory Entry Req:

- C Grades minimums for English, Maths, & Science
- NAPLAN/OLNA
- Completion of Certificate III Allied Health Assistance



Classroom

Timeframe:

Terms 1-3

Cost:

\$3000



Workplace Visits

Location:
Brightwater Aged Care Facilities OR other Allied Health Facilities

Time allocated:

120 Hours

Requirement:

HSH Scrub Uniform
NDIS Worker Clearance
Police Clearance
Immunisation History
Flu Vaccination



www.healthsciencehub.com.au

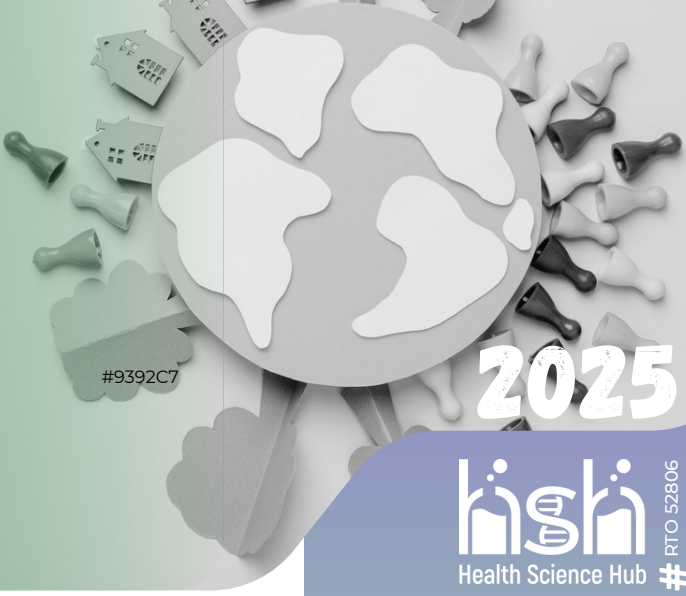


1800 474 786



Brightwater

POPULATION HEALTH



2025



RTO 52806

ABOUT THE COURSE

Dive into the fascinating field of public health and gain a deep understanding of the health challenges facing diverse communities worldwide. This comprehensive program equips you with the knowledge and skills to analyse population health data, identify social determinants of health, and develop strategies for promoting well-being and reducing gaps in the healthcare system.

Through interactive coursework and real-world case studies, you'll explore the complex interplay of factors that influence health outcomes, from socio-economic status and environmental conditions, to cultural beliefs and healthcare systems. Whether you're interested in disease prevention, health policy, or community outreach, our course offers a holistic perspective on population health that prepares you to make a meaningful impact on a global scale.

UNITS

- BSBWOR301 Organise personal work priorities and development
- CHCDIV001 Work with diverse people
- HLTPOP005 Work in a population health context
- HLTPOP007 Contribute to population health project planning
- HLTWHS001 Participate in workplace health and safety
- CHCCS001 Address the needs of people with chronic disease
- CHCCS020 Respond effectively to behaviours of concern
- CHCEDU008 Share health information
- CHCLLN001 Respond to client language, literacy and numeracy needs
- CHCMHS001 Work with people with mental health issues
- HLTWHS006 Manage personal stressors in the work environment
- HLTPOP008 Develop and implement disease prevention and control measures
- HLTPOP006 Contribute to working with the community to identify health needs

HLT36015 - CERTIFICATE III IN POPULATION HEALTH



Entry Requirements

Recommended for:

Year 11 or 12 Students

Preferable Entry Req:

- C Grade minimums for English, Maths, & Science
- NAPLAN/OLNA



Online

Timeframe:

18 months

Cost:

\$2000



www.healthsciencehub.com.au



1800 474 786

HEALTH & DISEASE

2025

hsh
Health Science Hub # RTO 52806

ABOUT THE COURSE

Take your knowledge of anatomy & physiology to the next level! Explore the intricate mechanisms of cellular function, genetic inheritance, and microbial interactions, gaining insight into the underlying causes of health conditions and disorders. With this advanced understanding, you'll have the foundational knowledge to pursue careers contributing to advancements in healthcare and improving patient outcomes.

As you move through this program, you'll start to prepare for a seamless transition to tertiary education by mastering vital study skills and communication techniques. You'll learn to tackle advanced studies with ease through teamwork and online research, setting you up to excel in academic settings.

UNITS

- HLTAAP002 Confirm physical health status
- PREMHS402 Provide information on the fundamental principles of microbiology used in health settings
- VU23282 Investigate anatomy and physiology
- VU23283 Investigate introductory genetics
- VU23281 Investigate cell biology
- VU23094 Research study options and plan education pathway
- VU23095 Prepare for tertiary reading and writing
- VU23096 Communicate verbally in a further study context
- VU23097 Participate in collaborative learning
- VU23098 Conduct online research for further study

22582VIC - CERTIFICATE IV IN TERTIARY PREPARATION



Entry Requirements

Recommended for:

Year 12 Students

Mandatory Entry Req:

- C Grade minimums for English, Maths, & Science
- NAPLAN/OLNA



Online

Timeframe:

18 months

Cost:

\$2200



www.healthsciencehub.com.au



1800 474 786

EMERGENCY RESPONDER



2025



RTO 52806

ABOUT THE COURSE

Embark on a rewarding journey in the field of emergency medical response with our Emergency Responder course. Designed for individuals passionate about making a difference in critical situations, this program equips you with the fundamental skills and knowledge needed to confidently respond to emergencies in your community.

Through hands-on training and expert instruction, you'll learn essential first aid techniques, CPR, and patient assessment. Our experienced instructors will guide you through realistic scenarios, preparing you to effectively assess and assist individuals in medical crises until advanced medical help arrives. Whether you're pursuing a career in emergency services or simply seeking to be better prepared to help others in emergencies, this course provides the perfect start to your journey.

UNITS

- CHCDIV001 Work with diverse people
- HLTAAP001 Recognise healthy body systems
- HLTAID011 Provide First Aid
- HLTOUT010 Communicate in complex situations to support health care
- HLTWHS002 Follow safe work practices for direct client care
- HLTWHS006 Manage personal stressors in the work environment
- HLTINF006 Apply basic principles and practices of infection prevention and control
- BSBMED301 Interpret and apply medical terminology appropriately
- HLTAID009 Provide Cardiopulmonary Resuscitation
- HLTHPS001 Take clinical measurement
- HLTOUT001 Implement safe access and egress



HLT31220 - CERTIFICATE III IN BASIC HEALTH CARE



Entry Requirements

Recommended for:
Year 11 or 12 Students

Preferable Entry Req:

- C Grade minimums for English, Maths, & Science
- NAPLAN/OLNA



Classroom

Timeframe:

Terms 1-3

Cost:

\$2200



Experience

Location:

- Various. Working with Perth Medical Volunteers
- Perth Medical Volunteers HQ Balcatta

Time allocated:

80 logged Hours

Requirement:

HSH Medic Uniform
Flu Vax, Police Clearance,
Working with Children Check



www.healthsciencehub.com.au



1800 474 786

ADVANCED EMERGENCY RESPONDER

2025



ABOUT THE COURSE

Building upon the foundational skills gained in our Certificate III medical qualifications, this Advanced Emergency Response qualification is for those seeking a deeper understanding of pre-hospital care & emergency medicine.

In this advanced course, you'll dive into advanced medical techniques and procedures, including advanced first aid, trauma care, responding to mental health, and delivering clinical care. This program aims at developing critical thinking and practical skills necessary to deliver high-quality care in high-pressure situations.

Led by experienced instructors with real-world expertise, you'll explore complex medical emergencies and refine your decision-making abilities, preparing you to effectively assess, stabilise, and manage patients until they can be transferred to further care.

UNITS

- HLTOU004 Assess and deliver basic clinical care - 80 hours wbl
- HLTOU008 Manage a scene
- HLTAAP002 Confirm physical health status
- CHCDIV001 Work with diverse people
- HLTOU010 Communicate in complex situations to support health care
- HLTWHS002 Follow safe work practices for direct client care
- HLTWHS006 Manage personal stressors in the work environment
- HLTINF006 Apply basic principles and practices of infection prevention and control
- HLTOU001 Implement safe access and egress
- HLTWHS005 Conduct manual tasks safely
- CHCLEG001 Work Legally and Ethically
- BSBFLM303 Contribute to effective workplace relationships
- BSBMED301 Interpret and apply medical terminology appropriately
- HLTAID015 - Provide advanced resuscitation and oxygen therapy
- HLTAID014 Provide Advanced First Aid
- CHCCCS020 Respond effectively to behaviours of concern



Entry Requirements

Recommended for:
Year 12 students

Mandatory Entry Req:

- C Grades minimums for English, Maths, & Science
- NAPLAN/OLNA
- Completion of the Cert III Basic Health Care OR Cert III in Health Services Assistance with HSH



Classroom

Timeframe:
Terms 1-3
Cost:
\$2500



Experience

Location:

- Various. Working with Perth Medical Volunteers
- Perth Medical Volunteers HQ Balcatta

Time allocated:
80 Treatment Hours
Requirement:
HSH Medic Uniform
Flu Vax, Police Clearance,
Working with Children Check



www.healthsciencehub.com.au



1800 474 786

DUAL ALLIED & ASSIST IN NURSING



2025

hsh
Health Science Hub # RTO 52806

ABOUT THE COURSE

Embark on a dynamic educational journey with our dual qualification, designed to provide you with a versatile skill set and a solid foundation for a multitude of health careers. Whether you aspire to become a nurse, allied health professional, or pursue a specialised healthcare role, our program offers the perfect stepping stone to launch your career. You'll delve into fundamental concepts of anatomy, physiology, and patient care, while also exploring areas such as medical terminology and clinical skills.

With hands-on practical experiences and clinical placements, you'll develop the clinical skills and critical thinking abilities essential for success in the healthcare industry.

UNITS

Health Service Assistance

- BSBMED301 Interpret and apply medical terminology appropriately
- BSBWOR301 Organise personal work priorities and development
- CHCCOM005 Communicate and work in health or community services
- CHCDIV001 Work with diverse people
- HLTAAP001 Recognise healthy body systems
- HLTWHS001 Participate in workplace health and safety
- CHCCS002 Assist with movement
- CHCCS012 Prepare and maintain beds
- CHCMHS001 Work with people with mental health issues
- HLTAID009 Provide cardiopulmonary resuscitation
- HLTAID010 Provide basic emergency life support
- HLTAID011 Provide First Aid
- HLTWHS005 Conduct manual tasks safely
- HLTHPS001 Take clinical measurements
- HLTINF006 Apply basic principles and practices of infection prevention and control

+ Allied Health

- HLTAHA027 Assist with an allied health program
- HLTAHA049 Recognise impact of health conditions
- CHCAGE007 Recognise and report risk of falls
- CHCCS020 Respond effectively to behaviours of concern
- CHCLAH001 Work effectively in the leisure and health industries
- HLTWHS005 Conduct manual tasks safely

HLT33021 – CERT III IN ALLIED HEALTH ASSISTANCE & HLT33115 – CERT III IN HEALTH SERVICES ASSISTANCE



Entry Requirements

Recommended for:
Year 11 or 12 Students
Preferable Entry Req:

- C Grade minimums for English, Maths, & Science
- NAPLAN/OLNA



Classroom

Timeframe:
Terms 1-3
2 days/week
Cost:
\$3200



Workplace Visits

Location:
Brightwater Aged Care Facilities OR other Allied Health Facilities
Time allocated:
120 Hours
Requirement:
HSH Scrub Uniform
NDIS Worker Clearance
Police Clearance
Immunisation History
Flu Vaccination



www.healthsciencehub.com.au



1800 474 786



Brightwater

DUAL EMERGENCY RESPONDER & ASSIST IN NURSING

2025



RTO 52806

ABOUT THE COURSE

Embark on a dynamic educational journey with our dual qualification, designed to provide you with a versatile skill set and a solid foundation for a multitude of health careers. Whether you aspire to become a nurse, paramedic, or pursue a specialised healthcare role, our program offers the perfect stepping stone to launch your career. You'll delve into fundamental concepts of anatomy, physiology, and patient care, while also exploring areas such as medical terminology and clinical skills.

With hands-on practical experiences and clinical placements, you'll develop the clinical skills and critical thinking abilities essential for success in the healthcare industry.

UNITS

Health Service Assistance

- BSBMED301 Interpret and apply medical terminology appropriately
- BSBWOR301 Organise personal work priorities and development
- CHCCOM005 Communicate and work in health or community services
- CHCDIV001 Work with diverse people
- HLTAAP001 Recognise healthy body systems
- HLTWHS001 Participate in workplace health and safety
- CHCCCS002 Assist with movement
- CHCCCS012 Prepare and maintain beds
- CHCMHS001 Work with people with mental health issues
- HLTAID009 Provide cardiopulmonary resuscitation
- HLTAID010 Provide basic emergency life support
- HLTAID011 Provide First Aid
- HLTWHS005 Conduct manual tasks safely
- HLTHPS001 Take clinical measurements
- HLTINF006 Apply basic principles and practices of infection prevention and control
- CHCCCS020 Respond effectively to behaviours of concern
- CHCCCS026 Transport individuals
- HLTAIN001 Assist with nursing care in an acute care environment
- HLTAIN002 Provide non-client contact support in an acute care environment

+ Basic Health Care

- HLTOUT010 Communicate in complex situations to support health care
- HLTWHS002 Follow safe work practices for direct client care
- HLTWHS006 Manage personal stressors in the work environment
- HLTOUT001 Implement safe access and egress

HLT31220 – CERT III IN BASIC HEALTH CARE & HLT33115 – CERT III IN HEALTH SERVICES ASSISTANCE

(ASSISTING IN NURSING WORK IN
ACUTE CARE)



Entry Requirements

Recommended for:

Year 11 or 12 Students

Preferable Entry Req:

- C Grade minimums for English, Maths, & Science
- NAPLAN/OLNA



Classroom

Timeframe:

Terms 1-4

Cost:

\$3000



Experience

Nursing Requirements:

Clinical measurements including urinalysis and blood glucose testing

Paramedic Requirements:

Location:

- Various. Working with Perth Medical Volunteers
- Perth Medical Volunteers HQ Balcatta

Time allocated:

80 logged Hours with Perth Medical Volunteers & 80 hours of work placement in an Aged Care facility

Requirement for both:

HSH Medic Uniform & HSH Scrubs, Flu Vax, Police Clearance, Working with Children Check

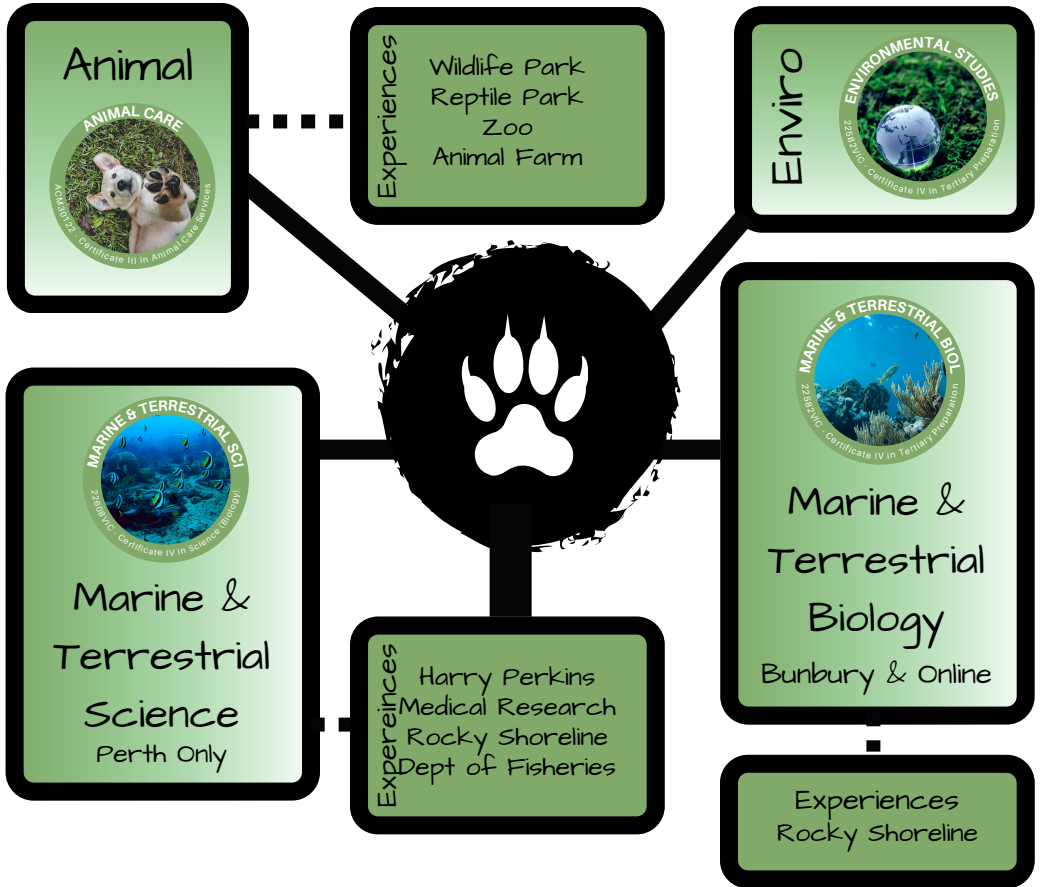


www.healthsciencehub.com.au



1800 474 786

Animal, Marine & Environmental



Here are some suggested University courses that these courses could lead to:

university

- Bachelor of Science (BSc) in Conservation and Wildlife Biology
- Bachelor of Science (BSc) in Environmental Management and Sustainability
- Bachelor of Science (BSc) in Environmental Science
- Bachelor of Science (BSc) in Marine Biology
- Bachelor of Science (BSc) in Marine Science
- Bachelor of Science (BSc) in Mathematics and Statistics
- Bachelor of Science
- Bachelor of Science (Environmental Management)
- Bachelor of Science (Marine and Freshwater Biology)
- Bachelor of Sustainability



2025



ABOUT THE COURSE

Prepare for a fulfilling career in animal care services with this paw-some qualification. Gain essential skills to confidently interact with animals, assess their welfare, and promote positive wellbeing in both yourself and others within animal care workplaces. Provide basic animal first aid, enrichment, and nutritional requirements, while maintaining and monitoring animal health and wellbeing.

This course focuses on the diverse needs of various animal species, including birds, mammals, fish, and non-venomous reptiles. For each of these species, you'll be feeding, investigating, handling, and maintaining their health.

Upon completion you'll have knowledge and skills in all animal basics that will help you achieve healthy and happy furry friends.

UNITS

- AHCFAU202 Recognise fauna
- ACMBEH301 Identify behaviours and interact safely with animals
- ACMGEN303 Assess the welfare status of an animal
- ACMGEN309 Provide basic animal first aid
- ACMGEN315 Communicate effectively with clients and team members
- ACMWHS301 Contribute to workplace health and safety processes
- ACMBEH302 Provide enrichment for animals
- ACMGEN311 Maintain and monitor animal health and wellbeing
- ACMGEN312 Provide nutritional requirements for animals
- ACMSP314 Provide general care of birds
- ACMSP315 Provide general care of common native mammals
- ACMSP318 Provide general care of fish
- ACMSP320 Provide general care of mammals
- ACMSP321 Provide general care of non-venomous reptiles
- ACMSP321 Implement and monitor environmentally sustainable work practices
- ACMINF301 Comply with infection control policies and procedures in animal care work
- ACMGEN304 Promote positive wellbeing in self and others in animal care workplaces

ACM30122 – CERTIFICATE III IN ANIMAL CARE SERVICES



Entry Requirements

- Recommended for:**
Year 11 or 12 Students
- Preferable Entry Req:**
- C Grade minimums for English & Maths
 - NAPLAN/OLNA



Classroom

- Timeframe:**
Terms 1-3
- Cost:**
\$2300 (\$2200 + \$100 experience visit fee)



Experience Visits

- **Classroom Only**
- Locations:**
Zoo, Wildlife Park, Animal Farm, Reptile Park
- Time allocated:**
4 Full Days



Online

- Timeframe:**
18 months
- Cost:**
\$2000
- Important:**
Students must source their own experience visits

ENVIRONMENTAL STUDIES

2025



ABOUT THE COURSE

Embark on an exhilarating journey into the dynamic worlds of environmental studies with our specialised qualification.

Start by exploring environmental health issues, and understanding the impact it has on different parts of the world. You'll dive into current environmental issues and complete some investigations into environmental challenges. You'll then get to spend some time looking to the future and the long term impact that environmental changes will have in decades to come.

As you move through this program, you'll start to prepare for a seamless transition to tertiary education by mastering vital study skills and communication techniques. You'll learn to tackle advanced studies with ease through teamwork and online research, setting you up to excel in academic settings.

UNITS

- HLTPOP031 Provide information and support on environmental health issues
- VU21885 Analyse human transformations of nature
- VU22403 Undertake a simple investigation of an environmental issue
- VU22445 Investigate current issues
- VU23284 Investigate ecology
- VU23094 Research study options and plan education pathway
- VU23095 Prepare for tertiary reading and writing
- VU23096 Communicate verbally in a further study context
- VU23097 Participate in collaborative learning
- VU23098 Conduct online research for further study

22582VIC - CERTIFICATE IV IN TERTIARY PREPARATION



Entry Requirements

Recommended for:

Year 11 or 12 Students

Mandatory Entry Req:

- C Grade minimums for English, Maths, & Science
- NAPLAN/OLNA



Online

Timeframe:

18 months

Cost:

\$2200



www.healthsciencehub.com.au



1800 474 786

MARINE & TERRESTRIAL SCIENCE

2025



ABOUT THE COURSE

Embark on an immersive journey into the captivating realms of marine and terrestrial science with our specialised qualification. Dive deep into the laboratory, master the world of cell biology and genetics, and explore the environment's secrets. From applying mathematical techniques to solving complex problems, our course equips you with the tools for success in the modern scientific landscape.

Continue your science journey into the areas of marine and terrestrial science by understanding animal anatomy and physiology and carrying out post-mortem examinations to get a close up look and make connections between theory and practice. You'll also be involved in conducting vital biological surveys on terrestrial and aquatic zones, and take a closer look at the intertidal zone.

UNITS

- MSL943004 Participate in laboratory or field workplace safety
- VU23268 Apply essential further study skills for science
- VU23269 Research scientific fields of study
- VU23270 Use a range of techniques to solve mathematical problems
- VU23271 Apply mathematical techniques to scientific contexts
- ICTICT221 Identify and use specific industry standard technologies
- MSL973016 Perform aseptic techniques
- VU23281 Investigate cell biology
- VU23282 Investigate anatomy and physiology
- VU23283 Investigate introductory genetics
- VU23284 Investigate ecology
- ACMATE511 Carry out post-mortem examination of a research animal
- ACMGEN314 Identify animal anatomy and physiology for animal care work
- AHCECR502 Conduct biological surveys
- VU22403 Undertake a simple investigation of an environmental issue

22608VIC - CERTIFICATE IV IN SCIENCE (BIOLOGY)



Entry Requirements

Recommended for:

Year 12 Students

Mandatory Entry Req:

- C Grade minimums for English, Maths, & Science
- NAPLAN/OLNA



Classroom

Timeframe:

Terms 1-3

Cost:

\$2600 (\$2500 + \$100 experience visit fee)



Experience Visits

Locations:

- Rocky Shoreline
- Dept of Fisheries
- Harry Perkins Institute of Medical Research

Time allocated:

3 Full days



www.healthsciencehub.com.au



1800 474 786

MARINE & TERRESTRIAL BIOLOGY

2025



ABOUT THE COURSE

Embark on an exhilarating journey into the dynamic worlds of marine & terrestrial biology with our specialised qualification.

Start your journey into the areas of marine and terrestrial biology by understanding animal anatomy and physiology and carrying out post-mortem examinations to get a close up look and make connections between theory and practice. You'll also be involved in conducting vital biological surveys on terrestrial and aquatic zones, and take a closer look at the intertidal zone.

As you move through this program, you'll start to prepare for a seamless transition to tertiary education by mastering vital study skills and communication techniques. You'll learn to tackle advanced studies with ease through teamwork and online research, setting you up to excel in academic settings.

UNITS

- ACMATE511 Carry out post-mortem examination of a research animal
- ACMGEN314 Identify animal anatomy and physiology for animal care work
- AHCECR502 Conduct biological surveys
- VU23282 Investigate anatomy and physiology
- VU23284 Investigate ecology
- VU23094 Research study options and plan education pathway
- VU23095 Prepare for tertiary reading and writing
- VU23096 Communicate verbally in a further study context
- VU23097 Participate in collaborative learning
- VU23098 Conduct online research for further study

22582VIC - CERTIFICATE IV IN TERTIARY PREPARATION



Entry Requirements

Recommended for:

Year 12 Students

Mandatory Entry Req:

- C Grade minimums for English, Maths, & Science
- NAPLAN/OLNA



Classroom

Timeframe:

Terms 1-3

Cost:

\$2500



Experience Visits

****Classroom Only**

Location:

Rocky Shoreline

Time allocated:

1 Full Day



Online

Timeframe:

18 months

Cost:

\$2200

Important:

Students must source their own experience visit

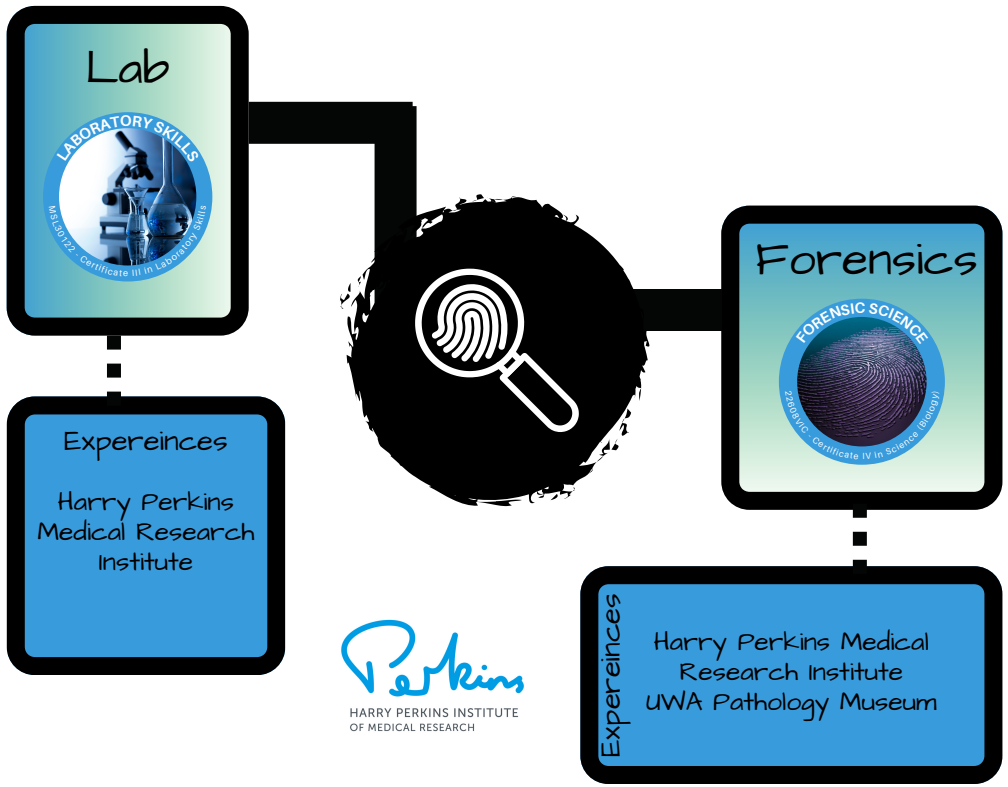


www.healthsciencehub.com.au



1800 474 786

Laboratory & Forensics



university Here are some suggested University courses that these courses could lead to:

- Bachelor of Criminology
- Bachelor of Science
- Bachelor of Laboratory Medicine
- Bachelor of Science
- Bachelor of Criminology & Justice
- Bachelor of Biomedical Science
- Bachelor of Health Science

LABORATORY SKILLS

2025



ABOUT THE COURSE

Gain essential skills for thriving in a laboratory environment, including conducting basic tests, analysing data, preparing culture media, handling solutions, mastering the use of microscopes, and capturing scientific images.

Experience hands-on learning at its best as you collaborate with experts from the renowned Harry Perkins Institute of Medical Research through three full days at their scientific laboratories where you'll apply your new-found skills to real-world scenarios.

Benefit from personalised attention in our small class groups, where emphasis is placed on effective communication, safety protocols, and adherence to rigorous quality standards. Develop problem-solving skills at every stage of your journey, preparing you for success in a dynamic and challenging field.

UNITS

- BSBCMM211 Apply communication skills
- MSL913004 Plan and conduct laboratory/field work
- MSL922002 Record and present data
- MSL933009 Contribute to the achievement of quality objectives
- MSL943004 Participate in laboratory or field workplace safety
- MSL924005 Process and interpret data
- MSL933005 Maintain the laboratory/field workplace fit for purpose
- MSL973015 Prepare culture media
- MSL973025 Perform basic tests
- MSL973026 Prepare working solutions
- MSL973027 Perform techniques that prevent cross-contamination
- MSL973028 Perform microscopic examination
- MSL974023 Capture and manage scientific images

MSL30122 - CERTIFICATE III IN LABORATORY SKILLS



Entry Requirements

Recommended for:
Year 11 or 12 Students

Mandatory Entry Req:

- C Grade minimums for English, Maths, & Science
- NAPLAN/OLNA



Classroom

Timeframe:
Terms 1-3

Cost:
\$2350 (\$2200 + \$150 workplace visit costs)



Workplace Visits

Location:
Harry Perkins Institute of Medical Research - Nedlands

Time allocated:
3 Full Days

Requirement:
HSH Lab Coat



www.healthsciencehub.com.au



1800 474 786


HARRY PERKINS INSTITUTE
OF MEDICAL RESEARCH

FORENSICS

2025



ABOUT THE COURSE

Step into the captivating world of forensic investigation with our forensic science qualification! Whether you dream of investigating crime scenes or unraveling mysteries in the lab, our forensics-focused course is your gateway to an amazing science-based career.

Throughout the year, you'll explore the areas of Biological, Laboratory, Environmental, and Mathematical Sciences, honing your skills in research, analysis, and evidence interpretation.

You'll gain practical experience in forensic sampling and evidence law to navigate the complexities of real-world investigations. With pathway opportunities to university and a dynamic blend of theory and hands-on learning, prepare to unlock endless possibilities in the fascinating field of forensic analysis.

UNITS

- MSL943004 Participate in laboratory or field workplace safety
- VU23268 Apply essential further study skills for science
- VU23269 Research scientific fields of study
- VU23270 Use a range of techniques to solve mathematical problems
- VU23271 Apply mathematical techniques to scientific contexts
- ICTICT221 Identify and use specific industry standard technologies
- MSL973016 Perform aseptic techniques
- VU23281 Investigate cell biology
- VU23282 Investigate anatomy and physiology
- VU23283 Investigate introductory genetics
- VU23284 Investigate ecology
- BSBLEG524 Apply principles of evidence law in matters under litigation
- MSL975052 Locate, record and collect forensic samples
- PSPGEN106 Conduct research and analysis
- VU22403 Undertake a simple investigation of an environmental issue

22608VIC - CERTIFICATE IV IN SCIENCE (BIOLOGY)



Entry Requirements

Recommended for:

Year 12 Students

Mandatory Entry Req:

- C Grade minimums for English, Maths, & Science
- NAPLAN/OLNA



Classroom

Timeframe:

Terms 1-3

Cost:

\$2600 (\$2500 + \$100 experience visit fee)



Experience Visits

Location:

- Harry Perkins Institute of Medical Research - Nedlands
- UWA Pathology Museum

Time allocated:

2 Full Days

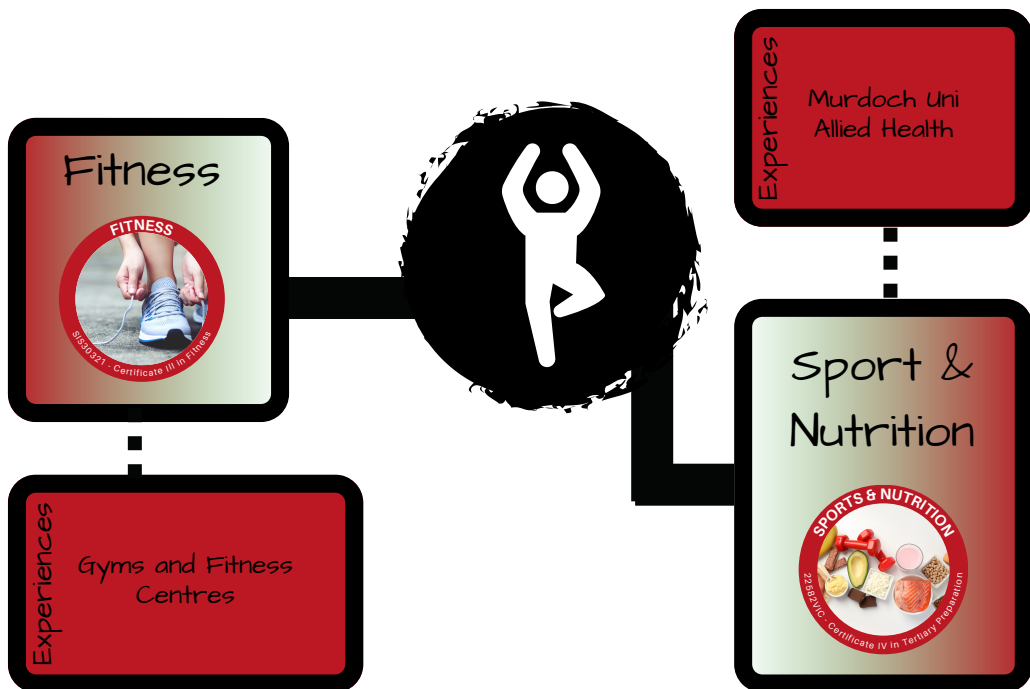


www.healthsciencehub.com.au



1800 474 786

Fitness, Sport & Nutrition



university

Here are some suggested University courses that these courses could lead to:

- Bachelor of Science (Exercise & Sports Science)
- Bachelor of Sport & Exercise Science
- Bachelor of Science (Exercise Science & Rehabilitation)
- Bachelor of Food Science & Nutrition
- Bachelor of Health Science (Human Movement)
- Bachelor of Sports Media
- Bachelor of Public Health
- Bachelor of Medical Science
- Bachelor of Nutrition Science

FITNESS

2025



RTO 52806

ABOUT THE COURSE

Embark on a journey of empowerment and wellness with our Fitness course. If you're passionate about health and helping others live their best lives, this comprehensive program is your gateway to a fulfilling career in the fitness industry. Learn the latest exercise science, nutrition principles, and coaching techniques to guide clients towards their fitness goals.

Through hands-on training and practical experience, you'll develop the skills to design personalised group fitness & gym programs, motivate clients, and foster positive lifestyle changes. Whether you dream of working as a personal trainer, group fitness instructor, or wellness coach, our course provides the foundation you need to succeed. Learn how to make a difference in people's lives every day by empowering them to achieve optimal health and happiness.

UNITS

- BSBOPS304 Deliver and monitor a service to customers
- BSBPEF301 Organise personal work priorities
- HLTAID011 Provide First Aid
- HLTWHS001 Participate in workplace health and safety
- SISFFIT032 Complete pre-exercise screening and service orientation
- SISFFIT033 Complete client fitness assessments
- SISFFIT035 Plan group exercise sessions
- SISFFIT036 Instruct group exercise sessions
- SISFFIT052 Provide healthy eating information
- BSBTEC301 Design and produce business documents
- HLTWHS005 Conduct manual tasks safely
- SIRXLS001 Sell to the retail customer
- HLTAID009 Provide cardiopulmonary resuscitation
- SISFFIT040 Develop and instruct gym-based exercise programs for individual clients
- SISFFIT047 Use anatomy and physiology knowledge to support safe and effective exercise

SIS30321 - CERTIFICATE III IN FITNESS



Entry Requirements

Recommended for:

Year 11 or 12 Students

Preferable Entry Req:

- C Grade minimums for English, Maths, & Science
- NAPLAN/OLNA



Classroom

Timeframe:

Terms 1-3

Cost:

\$2200



Online

Timeframe:

18 months

Cost:

\$2000



www.healthsciencehub.com.au



1800 474 786

SPORT & NUTRITION



2025



RTO 52806

ABOUT THE COURSE

Embark on an exhilarating journey into the dynamic world of sports and nutrition with our specialised qualification.

Dive into the essentials of lifespan development, sociological concepts, and health programming in leisure activities. Gain insights into nutrition and diet, learn to interpret and apply information to help others achieve a healthy lifestyle, and develop a thorough understanding of anti-doping policies to ensure integrity in sports.

As you move through this program, you'll start to prepare for a seamless transition to tertiary education by mastering vital study skills and communication techniques. You'll learn to tackle advanced studies with ease through teamwork and online research, setting you up to excel in academic settings.

UNITS

- CHCLAH005 Incorporate lifespan development and sociological concepts into leisure and health programming
- HLTHPS010 Interpret and use information about nutrition and diet
- SISSCO008 Apply anti-doping policies
- VU22402 Undertake a simple investigation of health and wellbeing
- VU23282 Investigate anatomy and physiology
- VU23094 Research study options and plan education pathway
- VU23095 Prepare for tertiary reading and writing
- VU23096 Communicate verbally in a further study context
- VU23097 Participate in collaborative learning
- VU23098 Conduct online research for further study

22582VIC – CERTIFICATE IV IN TERTIARY PREPARATION



Entry Requirements

Recommended for:
Year 12 Students

Mandatory Entry Req:

- C Grade minimums for English, Maths, & Science
- NAPLAN/OLNA



Classroom

Timeframe:

Terms 1-3

Cost:

\$2500



Online

Timeframe:

18 months

Cost:

\$2200



www.healthsciencehub.com.au



1800 474 786

Community, & Mental Health



university Here are some suggested University courses that these courses could lead to:

- Bachelor of Science
- Bachelor of Psychology
- Bachelor of Arts (Psychology)
- Bachelor of Psychology & Counselling
- Bachelor of Youth Work
- Bachelor of Counselling
- Bachelor of Social Work
- Bachelor of Health Science

SIGN LANGUAGE



2025



ABOUT THE COURSE

Begin your Auslan (Australian Sign Language) journey with our Certificate III in Auslan. Designed for those new to sign language, our program provides a welcoming and supportive environment to learn the basics of Auslan. You'll start with essential signs, gestures, and introductory grammar, building a solid foundation for communication. Our experienced instructors will guide you through interactive lessons, ensuring you feel comfortable and confident as you progress.

Auslan proficiency can be valuable in various career paths and industries where communication with Deaf or hard-of-hearing individuals is essential. Regardless of if you want to move into healthcare, community services, education, emergency services, or to be an interpreter - this course will be your first stepping stone on your journey to exciting career opportunities.

UNITS

- PSPLAN001 Converse in Auslan at a basic user level
- PSPLAN002 Compare the fundamental differences between Auslan and English structure
- PSPLAN003 Source information on Deaf culture, and communicate according to Deaf protocol
- PSPLAN004 Converse in Auslan at an independent user level (familiar subjects)
- PSPLAN005 Analyse the structure of Auslan signs
- PSPLAN006 Research the development of educational and social conditions for Australian Deaf communities

PSP30218 - CERTIFICATE III IN AUSLAN



Entry Requirements

Recommended for:
Year 11

Preferable Entry Req:

- C Grade minimum for English
- NAPLAN/OLNA
- Previous study of a language



Classroom

Timeframe:
Terms 1-3 in year 11, and
Terms 1-3 in year 12. = 2 year
qualification

Cost:
\$3900

Note: Students can add on a second qualification at Cert IV level in year 12 to work alongside this Cert III, however would need 2 day release from school.



www.healthsciencehub.com.au



1800 474 786

COMMUNITY SERVICES

2025



ABOUT THE COURSE

Embark on a fulfilling journey of service and compassion with our Community Services course. Designed for individuals passionate about making a positive impact in their communities, this course equips you with the skills and knowledge to support those in need effectively. From aiding vulnerable populations to advocating for social change, our course covers a wide range of topics, including mental health, case management, and community development.

Through immersive learning experiences and practical fieldwork placements, you'll gain hands-on experience and insight into the diverse needs of individuals and communities. Whether you aspire to work in child and family services, disability support, aged care, or community development, our course prepares you to address complex social issues with empathy, professionalism, and cultural competence helping you become an agent for positive change.

UNITS

- CHCCS016 Respond to client needs
- CHCCOM005 Communicate and work in health or community services
- CHCDIV001 Work with diverse people
- HLTWHS002 Follow safe work practices for direct client care
- HLTWHS006 Manage personal stressors in the work environment
- BSBWOR301 Organise personal work priorities and development
- CHCCS005 Conduct individual assessments
- CHCCDE003 Work within a community development framework
- CHCGRP001 Support group activities
- CHCMHS001 Work with people with mental health issues
- CHCVOL001 Be an effective volunteer
- CHCLEG001 Work legally and ethically



www.healthsciencehub.com.au



1800 474 786

CHC32015 – CERTIFICATE III IN COMMUNITY SERVICES



Entry Requirements

Recommended for:

Year 11 or 12 Students

Preferable Entry Req:

- C Grade minimum for English
- NAPLAN/OLNA



Classroom

Timeframe:

Terms 1-3

Cost:

\$2200



Workplace

****Classroom Only**

Location:

Community Vision

Time:

8 Full Days

Requirement:

Police Check, Flu Vax



Online

Timeframe:

18 months

Cost:

\$2000

BEHAVIOURAL HEALTH



2025



ABOUT THE COURSE

This qualification will prepare you for a world of helping others overcome the barriers to health and happiness. Taking a good look into mental health, addiction, and disease - you'll be able to understand how these areas affect the human body physically, emotionally, and mentally.

Identify what support services are in your local community, discover the resources available for those in need, and learn how to effectively connect individuals with the support they require. By completing this qualification, you will gain the skills and knowledge needed to make a meaningful difference in the lives of others and contribute positively to your community's wellbeing, while exploring a very rewarding and much needed career path as a social worker, counsellor, youth worker, community health, or peer support.

UNITS

- CHCDIV001 Work with diverse people
- CHCLEG001 Work legally and ethically
- HLTAID011 Provide First Aid
- HLTAAP001 Recognise healthy body systems
- CHCMHS001 Work with people with mental health issues
- CHCCS023 Support independence and wellbeing
- CHCAOD001 Work in an alcohol and other drugs context
- CHCCS004 Assess co-existing needs
- CHCEDU008 Share health information
- CHCCS014 Provide brief interventions
- CHCCOM002 Use communication to build relationships
- CHCCS001 Address the needs of people with chronic disease
- CHCPRP001 Develop and maintain networks and collaborative partnerships
- CHCCDE004 Implement participation and engagement strategies
- CHCAOD004 Assess needs of clients with alcohol and other drugs issues
- CHCAOD006 Provide interventions for people with alcohol and other drugs issues
- CHCAOD009 Develop and review individual alcohol and other drugs treatment plans

CHC43215 - CERTIFICATE IV IN ALCOHOL & OTHER DRUGS



Entry Requirements

Recommended for:
Year 12 Students

Mandatory Entry Req:

- C Grade minimums for English, Maths, & Science
- NAPLAN/OLNA



Classroom

Timeframe:

Terms 1-3

Cost:
\$2500



Online

Timeframe:

18 months

Cost:
\$2200



www.healthsciencehub.com.au



1800 474 786

PSYCHOLOGY

2025



ABOUT THE COURSE

Embark on an exhilarating journey into the dynamic worlds of psychology with our specialised qualification.

Utilising rigorous scientific inquiry methodology, you'll delve deep into the intricacies of human behaviour, cognition, and social dynamics, individual thinking and social psychology. You'll learn to assess and promote social, emotional, and physical wellbeing, equipping yourself with the skills to support individuals in navigating life's challenges and more.

As you move through this program, you'll start to prepare for a seamless transition to tertiary education by mastering vital study skills and communication techniques. You'll learn to tackle advanced studies with ease through teamwork and online research, setting you up to excel in academic settings.

UNITS

- ATPPSY001 Investigate psychology using science inquiry methodology
- ATPPSY002 Investigate individual thinking and social psychology
- CHCMHS011 Assess and promote social, emotional and physical wellbeing
- VU21890 Analyse sociological understandings of human relationships
- VU21892 Analyse theories of the self
- VU23094 Research study options and plan education pathway
- VU23095 Prepare for tertiary reading and writing
- VU23096 Communicate verbally in a further study context
- VU23097 Participate in collaborative learning
- VU23098 Conduct online research for further study

22582VIC - CERTIFICATE IV IN TERTIARY PREPARATION



Entry Requirements

Recommended for:

Year 12 Students

Mandatory Entry Req:

- C Grade minimums for English, Maths, & Science
- NAPLAN/OLNA



Classroom

Timeframe:

Terms 1-3

Cost:

\$2500



Online

Timeframe:

18 months

Cost:

\$2200



www.healthsciencehub.com.au



1800 474 786

1 Complete the form below to apply to study with HSH in 2025

Student Information:

First Name	<input type="text"/>	Date Of Birth	<input type="text" value="D"/>	<input type="text" value="D"/>	<input type="text" value="M"/>	<input type="text" value="M"/>	<input type="text" value="Y"/>	<input type="text" value="Y"/>
Surname	<input type="text"/>							
School	<input type="text"/>	School Grade in 2025	<input type="text" value="11"/>	<input type="text" value="12"/>	<input type="text" value="N/A"/>			
Student Email	<input type="text"/>							

2 **Select the program you want to enrol in:**
Year 11 & 12 Programs

Year 12 Programs

<input type="checkbox"/> Nursing: HLT33115 - Certificate III in Health Services Assistance <input type="checkbox"/> Allied Health HLT33021 - Certificate III in Allied Health Assistance - 4 Terms <input type="checkbox"/> Public Health HLT36015 - Certificate III in Population Health - Online Only <input type="checkbox"/> Medic: HLT31220 - Certificate III in Basic Health Care Dual Qualifications: <input type="checkbox"/> HLT31220 - Cert III in Basic Health Care & HLT33115 - Cert III in health services assistance - 4 Terms <input type="checkbox"/> HLT33021 - Cert III in allied health assistance & HLT33115 - Cert III in health services assistance - 2 days/week	<input type="checkbox"/> Nursing: 52895WA - Certificate IV in Preparation for Health & Nursing Studies <input type="checkbox"/> Allied Health HLT43021 - Certificate IV in Allied Health Assistance <input type="checkbox"/> Health & Disease 22582VIC - Certificate IV in Tertiary Preparation - Online Only <input type="checkbox"/> Medic: HLT41120 - Certificate IV in Health Care
<input type="checkbox"/> Animal Care: ACM30122 - Cert III in Animal Care Services	<input type="checkbox"/> Marine & Terrestrial Biology - Bunbury & Online Only 22582VIC - Cert IV in Tertiary Preparation <input type="checkbox"/> Marine & Terrestrial Science - Perth Only 22608VIC - Cert IV in Science (Biology) <input type="checkbox"/> Environmental Studies 22582VIC - Cert IV in Tertiary Preparation - Online Only
<input type="checkbox"/> Sign Language - 2 year course PSP30218 - Cert III in Auslan <input type="checkbox"/> Community Services: CHC32015 - Cert III in Community Services	<input type="checkbox"/> Psychology: 22582VIC - Cert IV in Tertiary Preparation <input type="checkbox"/> Behavioural Health: CHC43215 - Cert IV in Alcohol & Other Drugs
<input type="checkbox"/> Fitness: SIS30321 - Cert III in Fitness	<input type="checkbox"/> Sports & Nutrition: 22582VIC - Cert IV in Tertiary Preparation
<input type="checkbox"/> Laboratory Skills MSL30122 - Cert III in Laboratory Skills	<input type="checkbox"/> Forensics 22608VIC - Cert IV in Science (Biology)

3 **Please choose from the following options:**

A **Enrolment Options:**

B **Timetable:**

- Individual Qualification (1 qualification only)
- Dual Qualification (2 qualifications over 2 years)
Please select TWO qualifications in step 2.

- Classroom 2025
- Online 2024 Start
- Online 2025 Start

4 **Parent Information** Please write clearly to prevent the incorrect information being input into our system.

Full Name :	<input type="text"/>	Signature :	<input type="text"/>
Parent Email :	<input type="text"/>	Phone :	<input type="text"/>

5 **VET Coordinator Information** Not required if not attending high school

Name :	<input type="text"/>
Email :	<input type="text"/>
Signature :	<input type="text"/>

Powered by
Curiosity



Health Science Hub

RTO # 52806

Contact: 1800 474 786

Email: info@healthsciencehub.com.au

Perth Hub: Level 1, 100 Stirling Street, Perth WA 6000
Bunbury Hub: 62A Wittenoom Street, Bunbury WA 6230
Delivery Hubs: Murdoch University (South Street & Mandurah)

Online: Australia wide

